

Focusing on East Coast Riders and Their Horses

TODAY'S EQUESTRIAN

FREE! With compliments of our advertisers!

November/December 2011

Happy Holidays!

Fabulous Gift Ideas for Horse Lovers!

**Trainers Remember
Best Horsey Gifts**

**Ashley Holzer on
Flying Changes**

**Talent Search On for
Small Pony Rider!**

Presorted STD
US Postage Paid
Permit No. 21
Freeport, OH 43973

Hamp on Classic Highlights ...and more!

TODAY'S EQUESTRIAN

November/December 2011

Vol 6 Issue 7



Publisher

Ashley Holzer

Ashley@TodaysEquestrian.com

Associate Publisher and Managing Editor

Barbara Messina

631-451-3938 • fax 631-451-3924

Barbara@TodaysEquestrian.com

ADVERTISING SALES

Connecticut / NY State

Ann Jamieson

860-927-3737 • 203-733-3000 (cell)

Ann@TodaysEquestrian.com

Long Island / NYC

Patty Messina

631-761-1884 • 631-431-3368 (cell)

Patty@TodaysEquestrian.com

New Jersey / Pennsylvania

Leslie Sullivan

908-305-0540

Leslie@TodaysEquestrian.com

National /Special Projects/Social Networking

L. A. Pomeroy

413-586-6121

LAPomeroy@TodaysEquestrian.com

Subscriptions

Greig Nicoll

Greig@TodaysEquestrian.com

Today's Equestrian© is published ten times a year (combined issues in Nov/Dec and Jan/Feb) and serves the equine community in NY, NJ, CT and PA

Mailing Address:

P.O. Box 743 • Coram, N.Y. 11727

www.TodaysEquestrian.com

On the Cover

An Almost Winter Wonderland

by Les Knier, Knier Photography, Wrightsville, PA
Courtesy of Precise Buildings and Martin Auctioneers

See page 35

FEATURES

19-43 Talent Search is On for Small Pony Rider!

32 The Ridge Summer Spectacular and Asbury Jumper Classic Horse Show Series a Huge Success!

By Leslie Sullivan

41 Saddle Fitting for the Assymmetrically Built Horse

By KAM Animal Services

50 Holidays with Horses

By Kendall Fately

56 *Fashion Up!* with Stylist/Equestrian Rowlanda Blue Stephanos

60 Equine Thermal Imaging Put to the Test!

SPECIAL HOLIDAY GIFT FEATURES

66 Gifts for All Seasons

68 Fabulous Gift List for Horse Lovers

77 The Roving Reporter Asks:
"What was your best horsey gift?"

DEPARTMENTS

4 From the Publisher's Desk

8 Calendar of Shows & Events

18 News Column

22 At the Ingate: *All the gossip fit to print!*

By Stella Grand

22 Canine Corral: Horse Show Dog of the Month

24-30 Show Shots

39 Kip's Tips: "My horse ignores my leg!"

44 Ask Ashley: Improving Flying Changes

78 Today's Equestrian Directory

82 Classifieds

82 Word Search Puzzle

VISIT US ON

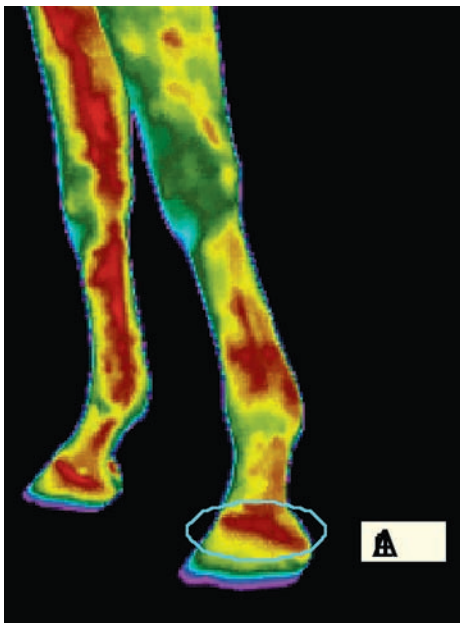
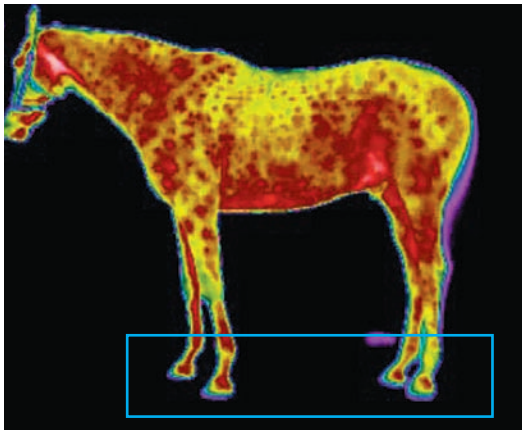
facebook

Note: Opinions expressed by contributing writers and advertisers are not necessarily those of publisher/editor of Today's Equestrian

Put to the Test!

EquineIR recently visited the stables of Ashley Holzer, 3-time Canadian Olympic dressage rider, to put Equine Thermal Imaging to the test.

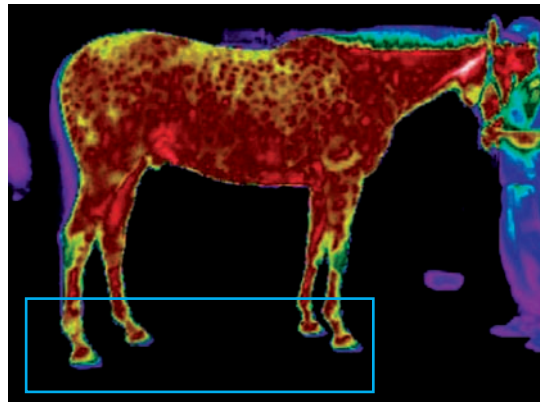
Equine Thermal Imaging utilizes a specialized camera that detects infrared waves and converts them into an image that is visible to the human eye. Heat emitted from the surface of the patient is directly correlated with circulation, which in turn, depicts areas of inflammation or increased blood flow. While



thermography is generally considered to detect hot spots, some of the more significant lesions may be cool areas, where nerves and blood vessels have been damaged.

A technician from ThermoScanIR was asked to scan one of Ashley's horses at Riverdale Equestrian Center to see just how the technology works. EquineIR provided the initial scans this past July and the following comments were made by the interpreting vet:

There is increased circulation in all 4 distal limbs, with the LF, medial RF, and RH feet showing an increase at the coronary bands suggesting inflammation. LF in particular exhibits increased heat as a fuzzy coronary band border. See images at left and below....

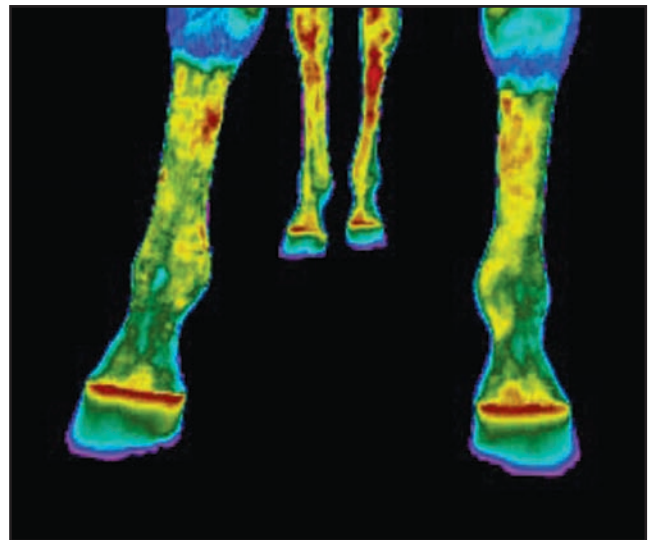
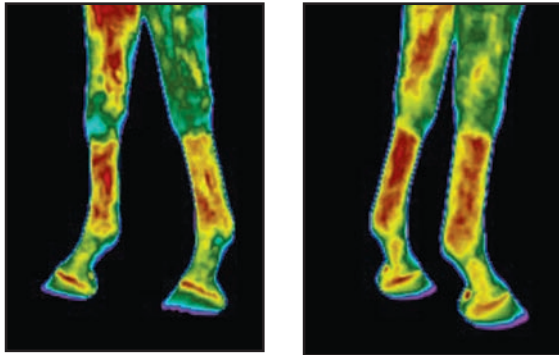


So powered with the IR images showing increased abnormal circulation in the horse's feet, the blacksmith was called to work his magic, having the insight of these IR images.

EquineIR again had their technician, ThermoScanIR, visit Riverdale Equestrian Center in late October and re-image the same horse to see what the results would show, having had sufficient time for the inflammation to have healed and the slight changes made to the feet.

The results are in!

The horse was re-imaged and clearly showed that the horse's feet were in much better condition. This information is not able to be seen by the human eye but with EquineIR, the results are obvious!



After seeing the results, we asked Ashley for her comments which were as follows:

"When I was first introduced to this Infra red technology I had to admit it sounded almost too good to be true. A camera that could detect current or potential problems without having to cause your horse any stress whatsoever! Really? Well I have to admit I was made a believer.

"I had recently been given a horse to train and when I started to work with him, I didn't feel that he was completely comfortable training. After assessing his imaging results, he clearly had signs of inflammation especially in his heels. Frankly, I was still not completely convinced. I consulted with my blacksmith and he made some slight changes. The horse actually felt much better within a week and felt totally comfort-

able training at an advanced level within three weeks! We re-imaged him 3 months later and the images showed tremendous improvement. His feet were completely cool! This is a great technology. The evaluation clearly pointed to the issue and when corrected showed immediate improvement.

"When it comes to being your very best and keeping your horse in top condition, this is an invaluable tool. It may warn you about a problem brewing or pinpoint the exact cause of pain that can sometimes be missed by other means of diagnosis.

"I recommend it to people as a means to determine areas of concern and also to evaluate your horse's overall health and comfort. It is even a comprehensive tool when it comes to evaluating exact saddle fit. I highly recommend it."

Ashley Holzer



An EquineIR technician scans a horse while Ashley Holzer looks on, at Riverdale Equestrian Center located in The Bronx, just minutes from Manhattan and Westchester County.

IRt, (infrared thermography), is a completely safe, non-invasive, non-destructive diagnostic modality. There is no harmful radiation exposure to the patient or handler unlike traditional x-rays. The standardized imaging procedure is fast, with an entire full horse scan done typically within 20-30 minutes. This procedure is done at your own premises so there is no need to trailer your horse or use any sedation whatsoever, eliminating the risks associated with drugs and recumbency.

Our scans are interpreted by veterinarians also certified in Equine Thermography.

Call EquineIR today to order your full horse scan:

888-SCAN-4-IR

www.equineIR.com


InterpretIR.com
Infrared Interpretation Services


EquineIR
EQUINE THERMAL IMAGING